

Massachusetts Institute of Technology  
Department of Electrical Engineering and Computer Science

6.685 Electric Machines

Class Notes 4: Elementary Synchronous Machine Models

©2005 James L. Kirtley Jr.

### 1 Introduction

The objective here is to develop a simple but physically meaningful model of the synchronous machine, one of the major classes of electric machine. We can look at this model from several different directions. This will help develop an understanding of analysis of machines, particularly in cases where one or another analytical picture is more appropriate than others. Both operation and sizing will be of interest here.

Along the way we will approach machine windings from two points of view. On the one hand, we will approximate windings as sinusoidal distributions of current and flux linkage. Then we will take a concentrated coil point of view and generalize that into a more realistic and useful winding model.

### 2 Physical Picture: Current Sheet Description

Consider this simple picture. The ‘machine’ consists of a cylindrical rotor and a cylindrical stator which are coaxial and which have sinusoidal current distributions on their surfaces: the outer surface of the rotor and the inner surface of the stator.

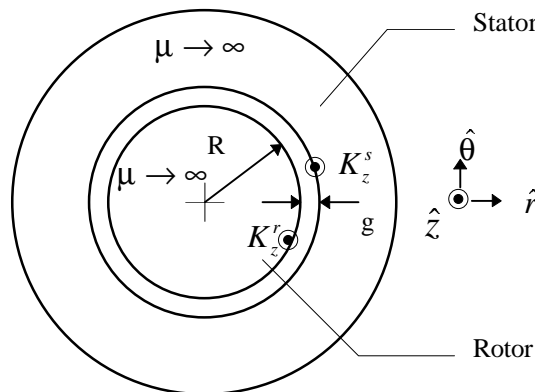


Figure 1: Elementary Machine Model: Axial View

The ‘rotor’ and ‘stator’ bodies are made of highly permeable material (we approximate this as being infinite for the time being, but this is something that needs to be looked at carefully later).

We also assume that the rotor and stator have current distributions that are axially (z) directed and sinusoidal:

$$\begin{aligned} K_z^S &= K_S \cos p\theta \\ K_z^R &= K_R \cos p(\theta - \phi) \end{aligned}$$

Here, the angle  $\phi$  is the physical angle of the rotor. The current distribution on the rotor is fixed with respect to the rotor. Now: assume that the air-gap dimension  $g$  is much less than the radius:  $g \ll R$ . It is not difficult to show that with this assumption the radial flux density  $B_r$  is nearly uniform across the gap (i.e. not a function of radius) and obeys:

$$\frac{\partial B_r}{\partial R\theta} = -\mu_0 \frac{K_z^S + K_z^R}{g}$$

Then the radial magnetic flux density for this case is simply:

$$B_r = -\frac{\mu_0 R}{pg} (K_S \sin p\theta + K_R \sin p(\theta - \phi))$$

Now it is possible to compute the traction on rotor and stator surfaces by recognizing that the surface current distributions are the azimuthal magnetic fields: at the surface of the stator,  $H_\theta = -K_z^S$ , and at the surface of the rotor,  $H_\theta = K_z^R$ . So at the surface of the rotor, traction is:

$$\tau_\theta = T_{r\theta} = -\frac{\mu_0 R}{pg} (K_S \sin p\theta + K_R \sin p(\theta - \phi)) K_R \cos p(\theta - \phi)$$

The average of that is simply:

$$\langle \tau_\theta \rangle = -\frac{\mu_0 R}{2pg} K_S K_R \sin p\phi$$

The same exercise done at the surface of the stator yields the same results (with opposite sign). To find torque, use:

$$T = 2\pi R^2 \ell \langle \tau_\theta \rangle = \frac{\mu_0 \pi R^3 \ell}{pg} K_S K_R \sin p\phi$$

We pause here to make a few observations:

1. For a given value of surface currents  $K_S$  and  $K_R$ , torque goes as the third power of linear dimension. That implies that the achieved shear stress is constant with machine size. And the ratio of machine torque density to machine volume is constant.
2. If, on the other hand, gap is held constant, torque goes as the fourth power of machine volume. Since the volume of the machine goes as the third power, this implies that torque capability goes as the 4/3 power of machine volume.
3. Actually, this understates the situation since the assumed surface current densities are the products of volume current densities and winding depth, which one would expect to increase with machine size. As machine radius grows one would expect both stator and rotor surface current densities to grow. Thus machine torque (and power) densities tend to increase somewhat faster than linearly with machine volume.

4. The current distributions want to align with each other. In actual practice what is done is to generate a stator current distribution which is not static as implied here but which rotates in space:

$$K_z^S = K_S \cos(p\theta - \omega t)$$

and this pulls the rotor along.

5. For a given pair of current distributions there is a maximum torque that can be sustained, but as long as the torque that is applied to the rotor is less than that value the rotor will adjust to the correct angle.

### 3 Continuous Approximation to Winding Patterns:

Now let's try to produce those surface current distributions with physical windings. In fact we can't do exactly that yet, but we can approximate a physical winding with a turns distribution that would look like:

$$\begin{aligned} n_S &= \frac{N_S}{2R} \cos p\theta \\ n_R &= \frac{N_R}{2R} \cos p(\theta - \phi) \end{aligned}$$

Note that this implies that  $N_S$  and  $N_R$  are the total number of turns on the rotor and stator. i.e.:

$$p \int_{-\pi/2}^{\pi/2} n_S R d\theta = N_S$$

Then the surface current densities are as we assumed above, with:

$$K_S = \frac{N_S I_S}{2R} \quad K_R = \frac{N_R I_R}{2R}$$

So far nothing is different, but with an assumed number of turns we can proceed to computing inductances. It is important to remember what these assumed winding distributions mean: they are the *density* of wires along the surface of the rotor and stator. A positive value implies a wire with sense in the +z direction, a negative value implies a wire with sense in the -z direction. That is, if terminal current for a winding is positive, current is in the +z direction if n is positive, in the -z direction if n is negative. In fact, such a winding would be made of elementary coils with one half (the negatively going half) separated from the other half (the positively going half) by a physical angle of  $\pi/p$ . So the flux linked by that elemental coil would be:

$$\Phi_i(\theta) = \int_{\theta-\pi/p}^{\theta} \mu_0 H_r(\theta') \ell R d\theta'$$

So, if only the stator winding is excited, radial magnetic field is:

$$H_r = -\frac{N_S I_S}{2gp} \sin p\theta$$

and thus the elementary coil flux is:

$$\Phi_i(\theta) = \frac{\mu_0 N_S I_S \ell R}{p^2 g} \cos p\theta$$

Now, this is flux linked by an elementary coil. To get flux linked by a whole winding we must ‘add up’ the flux linkages of all of the elementary coils. In our continuous approximation to the real coil this is the same as integrating over the coil distribution:

$$\lambda_S = p \int_{-\frac{\pi}{2p}}^{\frac{\pi}{2p}} \Phi_i(\theta) n_S(\theta) R d\theta$$

This evaluates fairly easily to:

$$\lambda_S = \mu_0 \frac{\pi \ell R N_S^2}{4 g p^2} I_S$$

which implies a self-inductance for the stator winding of:

$$L_S = \mu_0 \frac{\pi \ell R N_S^2}{4 g p^2}$$

The same process can be used to find self-inductance of the rotor winding (with appropriate changes of spatial variables), and the answer is:

$$L_R = \mu_0 \frac{\pi \ell R N_R^2}{4 g p^2}$$

To find the mutual inductance between the two windings, excite one and compute flux linked by the other. All of the expressions here can be used, and the answer is:

$$M(\phi) = \mu_0 \frac{\pi \ell R N_S N_R}{4 g p^2} \cos p\phi$$

Now it is fairly easy to compute torque using conventional methods. Assuming both windings are excited, magnetic coenergy is:

$$W'_m = \frac{1}{2} L_S I_S^2 + \frac{1}{2} L_R I_R^2 + M(\phi) I_S I_R$$

and then torque is:

$$T = \frac{\partial W'_m}{\partial \phi} = -\mu_0 \frac{\pi \ell R N_S N_R}{4 g p} I_S I_R \sin p\phi$$

and then substituting for  $N_S I_S$  and  $N_R I_R$ :

$$\begin{aligned} N_S I_S &= 2R K_S \\ N_R I_R &= 2R K_R \end{aligned}$$

we get the same answer for torque as with the field approach:

$$T = 2\pi R^2 \ell \langle \tau_\theta \rangle = -\frac{\mu_0 \pi R^3 \ell}{p g} K_S K_R \sin p\phi$$

## 4 Classical, Lumped-Parameter Synchronous Machine:

Now we are in a position to examine the simplest model of a polyphase synchronous machine. Suppose we have a machine in which the rotor is the same as the one we were considering, but the stator has three separate windings, identical but with spatial orientation separated by an electrical angle of  $120^\circ = 2\pi/3$ . The three stator windings will have the same self-inductance ( $L_a$ ).

With a little bit of examination it can be seen that the three stator windings will have mutual inductance, and that inductance will be characterized by the cosine of  $120^\circ$ . Since the physical angle between any pair of stator windings is the same,

$$L_{ab} = L_{ac} = L_{bc} = -\frac{1}{2}L_a$$

There will also be a mutual inductance between the rotor and each phase of the stator. Using  $M$  to denote the magnitude of that inductance:

$$\begin{aligned} M &= \mu_0 \frac{\pi \ell R N_a N_f}{4 g p^2} \\ M_{af} &= M \cos(p\phi) \\ M_{bf} &= M \cos\left(p\phi - \frac{2\pi}{3}\right) \\ M_{cf} &= M \cos\left(p\phi + \frac{2\pi}{3}\right) \end{aligned}$$

We show in Chapter 1 of these notes that torque for this system is:

$$T = -pM i_a i_f \sin(p\phi) - pM i_b i_f \sin\left(p\phi - \frac{2\pi}{3}\right) - pM i_c i_f \sin\left(p\phi + \frac{2\pi}{3}\right)$$

## 5 Balanced Operation:

Now, suppose the machine is operated in this fashion: the rotor turns at a constant velocity, the field current is held constant, and the three stator currents are sinusoids in time, with the same amplitude and with phases that differ by 120 degrees.

$$\begin{aligned} p\phi &= \omega t + \delta_i \\ i_f &= I_f \\ i_a &= I \cos(\omega t) \\ i_b &= I \cos\left(\omega t - \frac{2\pi}{3}\right) \\ i_c &= I \cos\left(\omega t + \frac{2\pi}{3}\right) \end{aligned}$$

Straightforward (but tedious) manipulation yields an expression for torque:

$$T = -\frac{3}{2}pM I I_f \sin \delta_i$$

Operated in this way, with balanced currents and with the mechanical speed consistent with the electrical frequency ( $p\Omega = \omega$ ), the machine exhibits a *constant* torque. The phase angle  $\delta_i$  is called the torque angle, but it is important to use some caution, as there is more than one torque angle.

Now, look at the machine from the electrical terminals. Flux linked by Phase A will be:

$$\lambda_a = L_a i_a + L_{ab} i_b + L_{ac} i_c + M I_f \cos p\phi$$

Noting that the sum of phase currents is, under balanced conditions, zero and that the mutual phase-phase inductances are equal, this simplifies to:

$$\lambda_a = (L_a - L_{ab}) i_a + M I_f \cos p\phi = L_d i_a + M I_f \cos p\phi$$

where we use the notation  $L_d$  to denote synchronous inductance.

Now, if the machine is turning at a speed consistent with the electrical frequency we say it is operating synchronously, and it is possible to employ complex notation in the sinusoidal steady state. Then, note:

$$i_a = I \cos(\omega t + \theta_i) = \text{Re} \{ I e^{j\omega t + \theta_i} \}$$

If , we can write an expression for the complex amplitude of flux as:

$$\lambda_a = \text{Re} \{ \underline{\Lambda}_a e^{j\omega t} \}$$

where we have used this complex notation:

$$\begin{aligned} \underline{I} &= I e^{j\theta_i} \\ \underline{I}_f &= I_f e^{j\theta_m} \end{aligned}$$

Now, if we look for terminal voltage of this system, it is:

$$v_a = \frac{d\lambda_a}{dt} = \text{Re} \{ j\omega \underline{\Lambda}_a e^{j\omega t} \}$$

This system is described by the equivalent circuit shown in Figure 2.

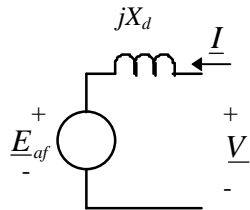


Figure 2: Round Rotor Synchronous Machine Equivalent Circuit

where the internal voltage is:

$$\underline{E}_{af} = j\omega M I_f e^{j\theta_m}$$

Now, if that is connected to a voltage source (i.e. if  $V$  is fixed), terminal current is:

$$\underline{I} = \frac{\underline{V} - E_{af}e^{j\delta}}{jX_d}$$

where  $X_d = \omega L_d$  is the *synchronous reactance*.

Then real and reactive power (in phase A) are:

$$\begin{aligned} P + jQ &= \frac{1}{2}\underline{V}\underline{I}^* \\ &= \frac{1}{2}\underline{V} \left( \frac{\underline{V} - E_{af}e^{j\delta}}{jX_d} \right)^* \\ &= \frac{1}{2} \frac{|\underline{V}|^2}{-jX_d} - \frac{1}{2} \frac{V E_{af} e^{j\delta}}{-jX_d} \end{aligned}$$

This makes real and reactive power:

$$\begin{aligned} P_a &= -\frac{1}{2} \frac{V E_{af}}{X_d} \sin \delta \\ Q_a &= \frac{1}{2} \frac{V^2}{X_d} - \frac{1}{2} \frac{V E_{af}}{X_d} \cos \delta \end{aligned}$$

If we consider all three phases, real power is

$$P = -\frac{3}{2} \frac{V E_{af}}{X_d} \sin \delta$$

Now, at last we need to look at actual operation of these machines, which can serve either as motors or as generators.

Vector diagrams that describe operation as a motor and as a generator are shown in Figures 3 and 4, respectively.

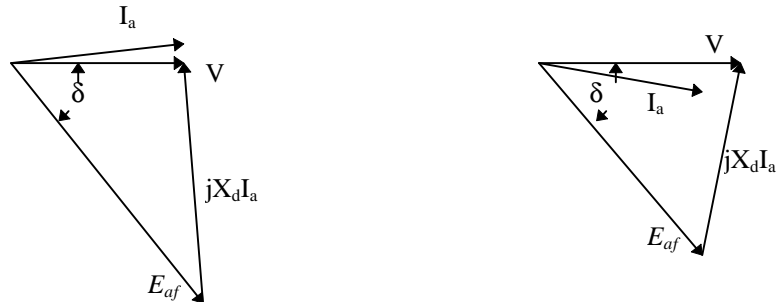


Figure 3: Motor Operation, Over- and Under- Excited

Operation as a generator is not much different from operation as a motor, but it is common to make notations with the terminal current given the opposite (“generator”) sign.

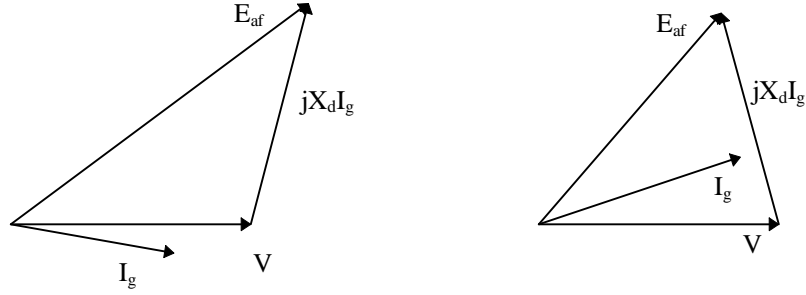


Figure 4: Generator Operation, Over- and Under- Excited

## 6 Reconciliation of Models

We have determined that we can predict its power and/or torque characteristics from two points of view : first, by knowing currents in the rotor and stator we could derive an expression for torque vs. a power angle:

$$T = -\frac{3}{2}pMII_f \sin \delta_i$$

From a circuit point of view, it is possible to derive an expression for power:

$$P = -\frac{3}{2} \frac{VE_{af}}{X_d} \sin \delta$$

and of course since power is torque times speed, this implies that:

$$T = -\frac{3}{2} \frac{VE_{af}}{\Omega X_d} \sin \delta = -\frac{3}{2} \frac{pVE_{af}}{\omega X_d} \sin \delta$$

In this section of the notes we will, first of all, reconcile these notions, look a bit more at what they mean, and then generalize our simple theory to salient pole machines as an introduction to two-axis theory of electric machines.

### 6.1 Torque Angles:

Figure 5 shows a vector diagram that shows operation of a synchronous motor. It represents the MMF's and fluxes from the rotor and stator in their respective positions in *space* during normal operation. Terminal flux is chosen to be 'real', or occupy the horizontal position. In motor operation the rotor lags by angle  $\delta$ , so the rotor flux  $MI_f$  is shown in that position. Stator current is also shown, and the torque angle between it and the rotor,  $\delta_i$  is also shown. Now, note that the dotted line OA, drawn perpendicular to a line drawn between the stator flux  $L_d I$  and terminal flux  $\Lambda_t$ , has length:

$$|OA| = L_d I \sin \delta_i = \Lambda_t \sin \delta$$

Then, noting that terminal voltage  $V = \omega \Lambda_t$ ,  $E_a = \omega MI_f$  and  $X_d = \omega L_d$ , straightforward substitution yields:

$$\frac{3}{2} \frac{pVE_{af}}{\omega X_d} \sin \delta = \frac{3}{2} pMII_f \sin \delta_i$$



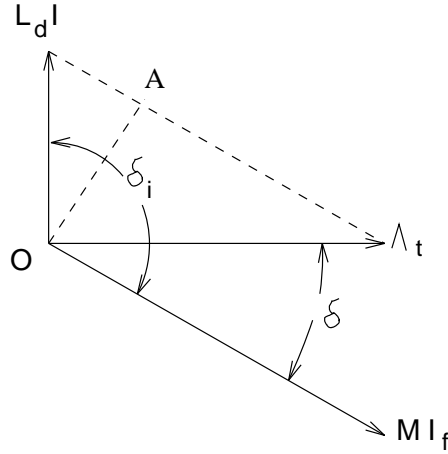


Figure 5: Synchronous Machine Phasor Addition

So the current- and voltage- based pictures *do* give the same result for torque.

## 7 Per-Unit Systems:

Before going on, we should take a short detour to look into per-unit systems, a notational device that, in addition to being convenient, will sometimes be conceptually helpful. The basic notion is quite simple: for most variables we will note a base quantity and then, by dividing the variable by the base we have a per-unit version of that variable. Generally we will want to tie the base quantity to some aspect of normal operation. So, for example, we might make the base voltage and current correspond with machine rating. If that is the case, then power base becomes:

$$P_B = 3V_B I_B$$

and we can define, in similar fashion, an impedance base:

$$Z_B = \frac{V_B}{I_B}$$

Now, a little caution is required here. We have defined voltage base as line-neutral and current base as line current (both RMS). That is not necessary. In a three phase system we could very well have defined base voltage to have been line-line and base current to be current in a delta connected element:

$$V_{B\Delta} = \sqrt{3}V_B \quad I_{B\Delta} = \frac{I_B}{\sqrt{3}}$$

In that case the base power would be unchanged but base impedance would differ by a factor of three:

$$P_B = V_{B\Delta} I_{B\Delta} \quad Z_{B\Delta} = 3Z_B$$

However, if we were consistent with actual impedances (note that a delta connection of elements of impedance  $3Z$  is equivalent to a wye connection of  $Z$ ), the per-unit impedances of a given system are not dependent on the particular connection. In fact one of the major advantages of using a

per-unit system is that per-unit values are uniquely determined, while ordinary variables can be line-line, line-neutral, RMS, peak, etc., for a large number of variations.

Perhaps unfortunate is the fact that base quantities are usually given as line-line voltage and base power. So that:

$$I_B = \frac{P_B}{\sqrt{3}V_{B\Delta}} \quad Z_B = \frac{V_B}{I_B} = \frac{1}{3} \frac{V_{B\Delta}}{I_{B\Delta}} = \frac{V_{B\Delta}^2}{P_B}$$

Now, we will usually write per-unit variables as lower-case versions of the ordinary variables:

$$v = \frac{V}{V_B} \quad p = \frac{P}{P_B} \quad \text{etc.}$$

Thus, written in per-unit notation, real and reactive power for a synchronous machine operating in steady state are:

$$p = -\frac{ve_{af}}{x_d} \sin \delta \quad q = \frac{v^2}{x_d} - \frac{ve_{af}}{x_d} \cos \delta$$

These are, of course, in motor reference coordinates, and represent real and reactive power into the terminals of the machine.

## 8 Normal Operation:

The synchronous machine is used, essentially interchangeably, as a motor and as a generator. Note that, as a motor, this type of machine produces torque only when it is running at synchronous speed. This is not, of course, a problem for a turbogenerator which is started by its prime mover (e.g. a steam turbine). Many synchronous motors are started as induction machines on their damper cages (sometimes called starting cages). And of course with power electronic drives the machine can often be considered to be “in synchronism” even down to zero speed.

As either a motor or as a generator, the synchronous machine can either produce or consume reactive power. In normal operation real power is dictated by the load (if a motor) or the prime mover (if a generator), and reactive power is determined by the real power and by field current.

Figure 6 shows one way of representing the capability of a synchronous machine. This picture represents operation as a generator, so the signs of  $p$  and  $q$  are reversed, but all of the other elements of operation are as we ordinarily would expect. If we plot  $p$  and  $q$  (calculated in the normal way) against each other, we see the construction at the right. If we start at a location  $q = -v^2/x_d$ , (and remember that normally  $v = 1$  per-unit), then the locus of  $p$  and  $q$  is what would be obtained by swinging a vector of length  $ve_{af}/x_d$  over an angle  $\delta$ . This is called a *capability chart* because it is an easy way of visualizing what the synchronous machine (in this case generator) can do. There are three easily noted limits to capability. The upper limit is a circle (the one traced out by that vector) which is referred to as *field* capability. The second limit is a circle that describes constant  $|p + jq|$ . This is, of course, related to the magnitude of armature current and so this limit is called *armature* capability. The final limit is related to machine stability, since the torque angle cannot go beyond 90 degrees. In actuality there are often other limits that can be represented on this type of a chart. For example, large synchronous generators typically have a problem with heating of the stator iron when they attempt to operate in highly underexcited conditions ( $q$  strongly negative), so that one will often see another limit that prevents the operation of the machine near its stability

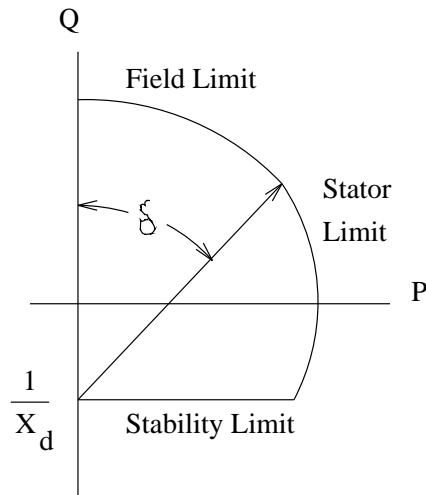


Figure 6: Synchronous Generator Capability Diagram

limit. In very large machines with more than one cooling state (e.g. different values of cooling hydrogen pressure) there may be multiple curves for some or all of the limits.

Another way of describing the limitations of a synchronous machine is embodied in the *Vee Curve*. An example is shown in Figure 7. This is a cross-plot of magnitude of armature current with field current. Note that the field and armature current limits are straightforward (and are the right-hand and upper boundaries, respectively, of the chart). The machine stability limit is what terminates each of the curves at the upper left-hand edge. Note that each curve has a minimum at unity power factor. In fact, there is yet another cross-plot possible, called a *compounding curve*, in which field current is plotted against real power for fixed power factor.

## 9 Salient Pole Machines: Two-Reaction Theory

So far, we have been describing what are referred to as “round rotor” machines, in which stator reactance is not dependent on rotor position. This is a pretty good approximation for large turbine generators and many smaller two-pole machines, but it is not a good approximation for many synchronous motors nor for slower speed generators. For many such applications it is more cost effective to wind the field conductors around steel bodies (called poles) which are then fastened onto the rotor body, with bolts or dovetail joints. These produce magnetic anisotropies into the machine which affect its operation. The theory which follows is an introduction to two-reaction theory and consequently for the rotating field transformations that form the basis for most modern dynamic analyses.

Figure 8 shows a very schematic picture of the salient pole machine, intended primarily to show how to frame this analysis. As with the round rotor machine the stator winding is located in slots in the surface of a highly permeable stator core annulus. The field winding is wound around steel pole pieces. We separate the stator current sheet into two components: one aligned with and one in quadrature to the field. Remember that these two current components are themselves (linear) combinations of the stator phase currents. The transformation between phase currents and the d-

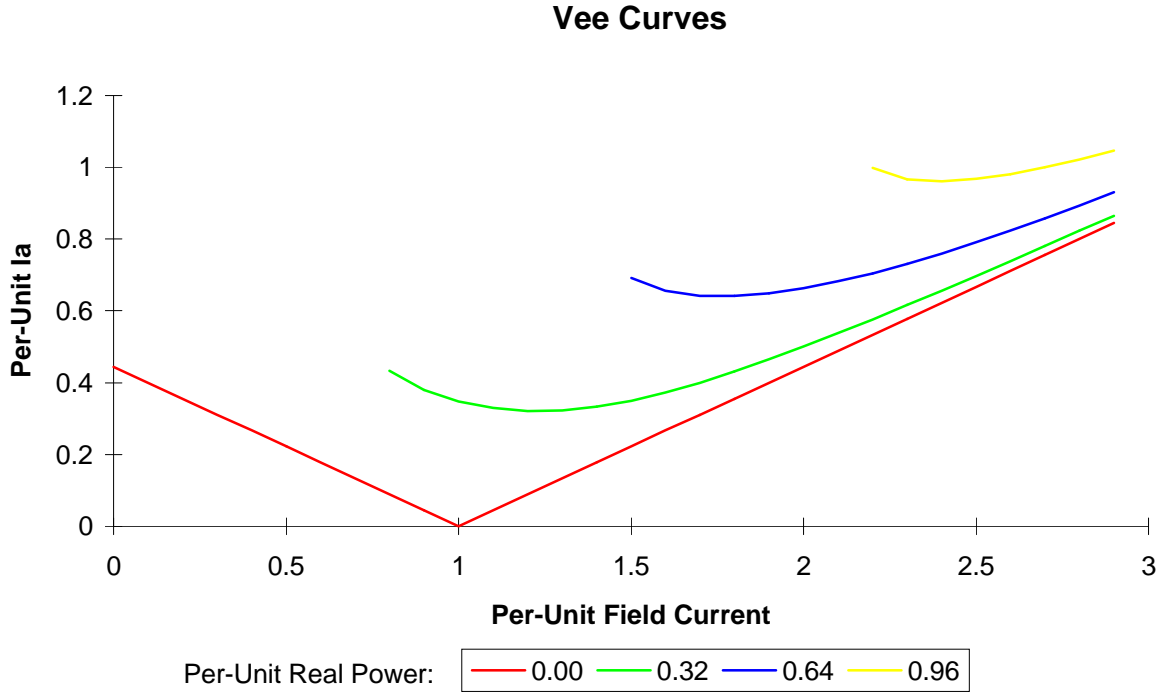


Figure 7: Synchronous Machine Vee Curve

and q- axis components is straightforward and will appear in Chapter 8 of these notes.

The key here is to separate MMF and flux into two orthogonal components and to pretend that each can be treated as sinusoidal. The two components are aligned with the direct axis and with the quadrature axis of the machine. The direct axis is aligned with the field winding, while the quadrature axis leads the direct by 90 degrees. Then, if  $\phi$  is the angle between the direct axis and the axis of phase a, we can write for flux linking phase a:

$$\lambda_s = \lambda_d \cos \phi - \lambda_q \sin \phi$$

Then, in steady state operation, if  $V_a = \frac{d\lambda_a}{dt}$  and  $\phi = \omega t + \delta$ ,

$$V_a = -\omega \lambda_s \sin \phi - \omega \lambda_q \cos \phi$$

which allows us to define:

$$\begin{aligned} V_d &= -\omega \lambda_q \\ V_q &= \omega \lambda_d \end{aligned}$$

one might think of the ‘voltage’ vector as leading the ‘flux’ vector by 90 degrees.

Now, if the machine is linear, those fluxes are given by:

$$\begin{aligned} \lambda_d &= L_d I_d + M I_f \\ \lambda_q &= L_q I_q \end{aligned}$$

Note that, in general,  $L_d \neq L_q$ . In wound-field synchronous machines, usually  $L_d > L_q$ . The reverse is true for most salient (buried magnet) permanent magnet machines.

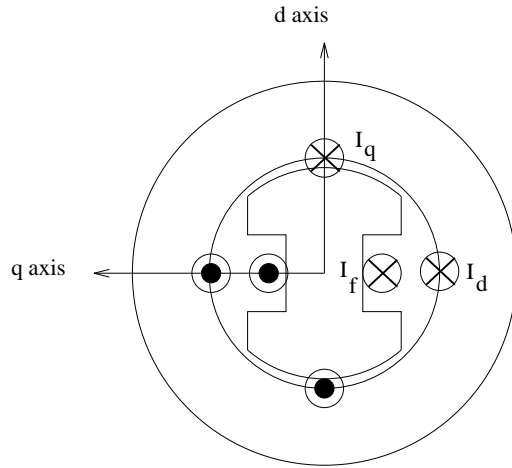


Figure 8: Cartoon of a Salient Pole Synchronous Machine

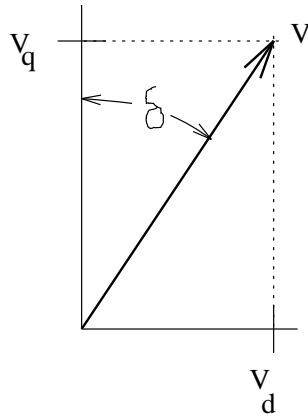


Figure 9: Resolution of Terminal Voltage

Referring to Figure 9, one can resolve terminal voltage into these components:

$$\begin{aligned} V_d &= V \sin \delta \\ V_q &= V \cos \delta \end{aligned}$$

or:

$$\begin{aligned} V_d &= -\omega \lambda_q = -\omega L_q I_q = V \sin \delta \\ V_q &= \omega \lambda_d = \omega L_d I_d + \omega M I_f = V \cos \delta \end{aligned}$$

which is easily inverted to produce:

$$\begin{aligned} I_d &= \frac{V \cos \delta - E_{af}}{X_d} \\ I_q &= -\frac{V \sin \delta}{X_q} \end{aligned}$$

where

$$X_d = \omega L_d \quad X_q = \omega L_q \quad E_{af} = \omega M I_f$$

Now, we are working in ordinary variables (this discussion should help motivate the use of per-unit!), and each of these variables is peak amplitude. Then, if we take up a complex frame of reference:

$$\begin{aligned} \underline{V} &= V_d + jV_q \\ \underline{I} &= I_d + jI_q \end{aligned}$$

complex power is:

$$P + jQ = \frac{3}{2} \underline{V} \underline{I}^* = \frac{3}{2} \{(V_d I_d + V_q I_q) + j(V_q I_d - V_d I_q)\}$$

or:

$$\begin{aligned} P &= -\frac{3}{2} \left( \frac{V E_{af}}{X_d} \sin \delta + \frac{V^2}{2} \left( \frac{1}{X_q} - \frac{1}{X_d} \right) \sin 2\delta \right) \\ Q &= \frac{3}{2} \left( \frac{V^2}{2} \left( \frac{1}{X_d} + \frac{1}{X_q} \right) - \frac{V^2}{2} \left( \frac{1}{X_q} - \frac{1}{X_d} \right) \cos 2\delta - \frac{V E_{af}}{X_d} \cos \delta \right) \end{aligned}$$

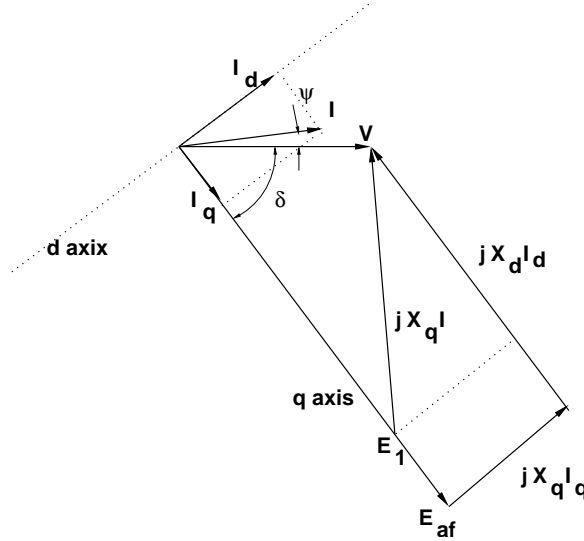


Figure 10: Phasor Diagram: Salient Pole Machine

A phasor diagram for a salient pole machine is shown in Figure 10. This is a little different from the equivalent picture for a round-rotor machine, in that stator current has been separated into its d- and q- axis components, and the voltage drops associated with those components have been drawn separately. It is interesting and helpful to recognize that the internal voltage  $E_{af}$  can be expressed as:

$$E_{af} = E_1 + (X_d - X_q) I_d$$

where the voltage  $E_1$  is on the quadrature axis. In fact,  $E_1$  would be the internal voltage of a round rotor machine with reactance  $X_q$  and the same stator current and terminal voltage. Then the operating point is found fairly easily:

$$\delta = -\tan^{-1} \left( \frac{X_q I \cos \psi}{V + X_q I \sin \psi} \right)$$

$$E_1 = \sqrt{(V + X_q I \sin \psi)^2 + (X_q I \cos \psi)^2}$$

### Power-Angle Curves

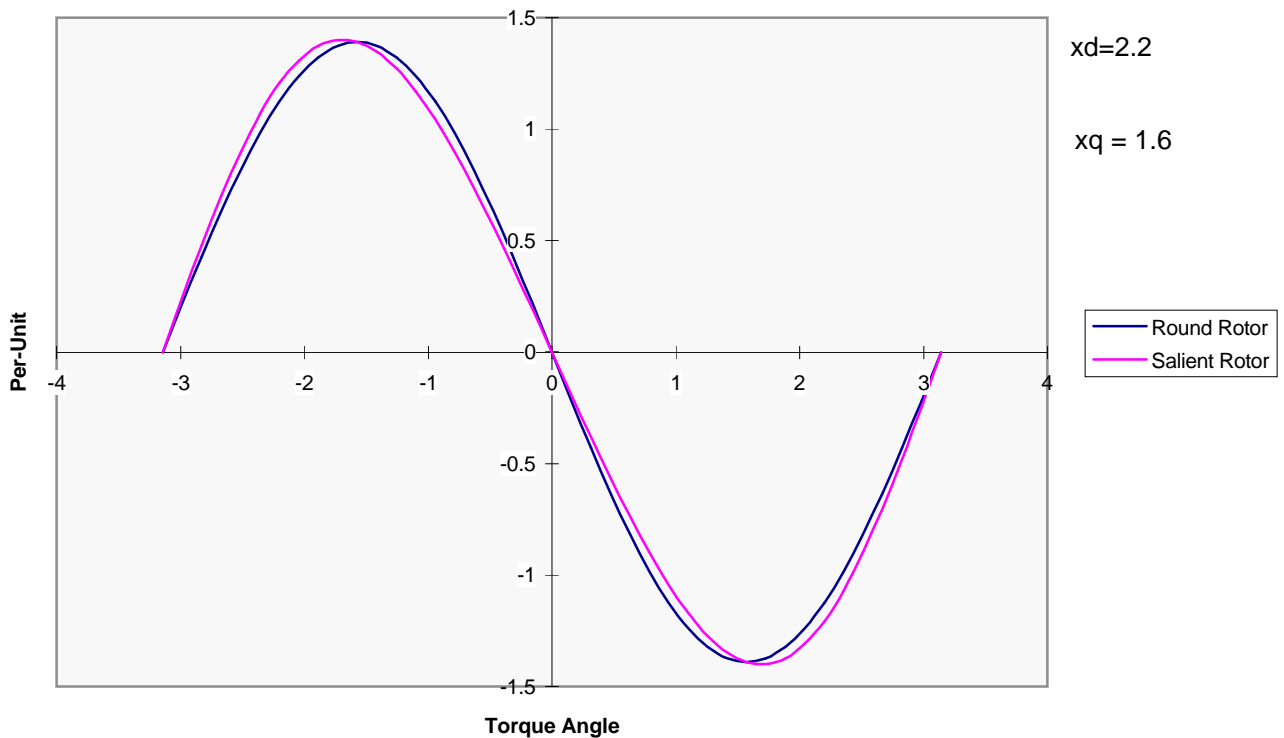


Figure 11: Torque-Angle Curves: Round Rotor and Salient Pole Machines

A comparison of torque-angle curves for a pair of machines, one with a round, one with a salient rotor is shown in Figure 11 . It is not too difficult to see why power systems analysts often neglect saliency in doing things like transient stability calculations.

## 10 Relating Rating to Size

It is possible, even with the simple model we have developed so far, to establish a quantitative relationship between machine size and rating, depending (of course) on elements such as useful flux and surface current density. To start, note that the rating of a machine (motor or generator) is:

$$|P + jQ| = qVI$$

where  $q$  is the number of phases,  $V$  is the RMS voltage in each phase and  $I$  is the RMS current. To establish machine rating we must establish voltage and current, and we do these separately.

## 10.1 Voltage

Assume that our sinusoidal approximation for turns density is valid:

$$n_a(\theta) = \frac{N_a}{2R} \cos p\theta$$

And suppose that working flux density is:

$$B_r(\theta) = B_0 \sin p(\theta - \phi)$$

Now, to compute flux linked by the winding (and consequently to compute voltage), we first compute flux linked by an incremental coil:

$$\lambda_i(\theta) = \int_{\theta}^{\theta + \frac{\pi}{p}} \ell B_r(\theta') R d\theta'$$

Then flux linked by the whole coil is:

$$\lambda_a = p \int_{-\frac{\pi}{2p}}^{\frac{\pi}{2p}} \lambda_i(\theta) n_a(\theta) R d\theta = \frac{\pi}{4} \frac{2\ell R N_a}{p} B_0 \cos p\phi$$

This is instantaneous flux linked when the rotor is at angle  $\phi$ . If the machine is operating at some electrical frequency  $\omega$  with a phase angle so that  $p\phi = \omega t + \delta$ , the RMS magnitude of terminal voltage is:

$$V_a = \frac{\omega}{p} \frac{\pi}{4} 2\ell R N_a \frac{B_0}{\sqrt{2}}$$

Finally, note that the useful peak current density that can be used is limited by the fraction of machine periphery used for slots:

$$B_0 = B_s (1 - \lambda_s)$$

where  $B_s$  is the flux density in the teeth, limited by saturation of the magnetic material.

## 10.2 Current

The (RMS) magnitude of the current sheet produced by a current of (RMS) magnitude  $I$  is:

$$K_z = \frac{q}{2} \frac{N_a I}{2R}$$

And then the current is, in terms of the current sheet magnitude:

$$I = 2R K_z \frac{2}{q N_a}$$

Note that the surface current density is, in terms of area current density  $J_s$ , slot space factor  $\lambda_s$  and slot depth  $h_s$ :

$$K_z = \lambda_s J_s h_s$$

This gives terminal current in terms of dimensions and useful current density:

$$I = \frac{4R}{q N_a} \lambda_s h_s J_s$$



### 10.3 Rating

Assembling these expressions, machine rating becomes:

$$|P + jQ| = qVI = \frac{\omega}{p} 2\pi R^2 \ell \frac{B_s}{\sqrt{2}} \lambda_s (1 - \lambda_s) h_s J_s$$

This expression is actually fairly easily interpreted. The product of slot factor times one minus slot factor optimizes rather quickly to 1/4 (when  $\lambda_s = 1$ ). We could interpret this as:

$$|P = jQ| = A_s u_s \tau^*$$

where the interaction *area* is:

$$A_s = 2\pi R \ell$$

The surface velocity of interaction is:

$$u_s = \frac{\omega}{p} R = \Omega R$$

and the fragment of expression which “looks like” traction is:

$$\tau^* = h_s J_s \frac{B_s}{\sqrt{2}} \lambda_s (1 - \lambda_s)$$

Note that this is not quite traction since the current and magnetic flux may not be ideally aligned, and this is why the expression incorporates reactive as well as real power.

This is not quite yet the whole story. The limit on  $B_s$  is easily understood to be caused by saturation of magnetic material. The other important element on shear stress density,  $h_s J_s$  is a little more involved.

### 10.4 Role of Reactance

The *per-unit*, or normalized synchronous reactance is:

$$x_d = X_d \frac{I}{V} = \frac{\mu_0 R}{pg} \frac{\lambda_s}{1 - \lambda_s} \sqrt{2} \frac{h_s J_s}{B_s}$$

While this may be somewhat interesting by itself, it becomes useful if we solve it for  $h_s J_a$ :

$$h_s J_a = x_d g \frac{p(1 - \lambda_s) B_s}{\mu_0 R \lambda_s \sqrt{2}}$$

That is, if  $x_d$  is fixed,  $h_s J_a$  (and so power) are directly related to air-gap  $g$ . Now, to get a limit on  $g$ , we must answer the question of how far the field winding can “throw” effective air-gap flux? To understand this question, we must calculate the field current to produce rated voltage, no-load, and then the excess of field current required to accommodate load current.

Under *rated* operation, per- unit field voltage is:

$$e_{af}^2 = v^2 + (x_d i)^2 + 2x_d i \sin \psi$$

Or, if at rated conditions  $v$  and  $i$  are both unity (one per- unit), then

$$e_{af} = \sqrt{1 + x_d^2 + 2x_d \sin \psi}$$

## 10.5 Field Winding

Thus, given a value for  $x_d$  and  $\psi$ , per-unit internal voltage  $e_{af}$  is also fixed. Then field current required can be calculated by first estimating field winding current for “no-load operation”.

$$B_r = \frac{\mu_0 N_f I_{fnl}}{2gp}$$

and *rated* field current is:

$$I_f = I_{fnl} e_{af}$$

or, required rated field current is:

$$N_f I_f = \frac{2gp(1 - \lambda_s) B_s}{\mu_0} e_{af}$$

Next,  $I_f$  can be related to a field current *density*:

$$N_f I_f = \frac{N_{RS}}{2} A_{RS} J_f$$

where  $N_{RS}$  is the number of rotor slots and the rotor slot area  $A_{RS}$  is

$$A_{RS} = w_R h_R$$

where  $h_R$  is rotor slot *height* and  $w_R$  is rotor slot *width*:

$$w_R = \frac{2\pi R}{N_{RS}} \lambda_R$$

Then:

$$N_f I_f = \pi R \lambda_R h_R J_f$$

Now we have a value for air-gap  $g$ :

$$g = \frac{\pi}{2} \frac{\mu_0 R \lambda_R h_R J_f}{p(1 - \lambda_s) B_s e_{af}}$$

This then gives us useful armature surface current density:

$$h_s J_s = \frac{\pi}{2\sqrt{2}} \frac{x_d}{e_{af}} \frac{\lambda_R}{\lambda_s} h_R J_f$$

We will not have a lot more to say about this. Note that the ratio of  $x_d/e_{af}$  can be quite small (if the per-unit reactance is small), will never be a very large number for any practical machine, and is generally less than one. As a practical matter it is unusual for the per-unit synchronous reactance of a machine to be larger than about 2 or 2.25 per-unit. What this tells us should be obvious: either the rotor or the stator of a machine can produce the dominant limitation on shear stress density (and so on rating). The best designs are “balanced”, with both limits being reached at the same time.

MIT OpenCourseWare  
<http://ocw.mit.edu>

6.685 Electric Machines  
Fall 2013

For information about citing these materials or our Terms of Use, visit: <http://ocw.mit.edu/terms>.