

Instructions for installing LabVIEW software for 2.14 labs

1. Go to <http://www.ni.com/academic/download.htm>. You should see the screen in Figure 1.

Evaluate NI LabVIEW for 7 Days

[Download LabVIEW \(1.17 GB\)](#)

Additional Software Downloads

Many downloads include a downloader file to increase the transfer speed of the software and the ability to resume a download if interrupted. After the file is installed, your software download begins.

Note: If you install any of the service packs below without a software license, the new version will not work and you will need to reinstall your original version of LabVIEW.

LabVIEW Development Environment — Current and Previous Versions

- ▶ English
- ▶ Localized Versions

Application-Specific Toolkits/Modules — Current and Previous Versions

- ▶ Core Engineering
- ▶ Measurements and Data Management
- ▶ Control and Robotics
- ▶ Real-Time and Embedded
- ▶ Communications and Signal Processing
- ▶ Circuit Design and Simulation

Hardware Drivers

- ▶ NI Device Drivers

Figure 1: Website for software download

2. Expand the categories and download the software highlighted in red in Figure 2

Application-Specific Toolkits/Modules — Current and Previous Versions

- ▶ Core Engineering
- ▶ Measurements and Data Management
- ▼ Control and Robotics

Product Description	August 2013	March 2013	August 2012	February 2012	August 2011
LabVIEW Control Design and Simulation Module	398 MB	378 MB	373 MB	336 MB	336 MB
NI myRIO Software Suite 1.0 (DVD 1 of 2)	6.43 GB	NA	NA	NA	NA
NI myRIO Software Suite 1.0 (DVD 2 of 2)	4.79 GB	NA	NA	NA	NA
LabVIEW 2013 for myRIO Module	1.7 GB	NA	NA	NA	NA
LabVIEW System Identification Toolkit	136 MB	113 MB	113 MB	111 MB	111 MB
NI Vision Development Module	1.15 GB	1.04 GB	1 GB	772 MB	765 MB
NI Vision Builder for Automated Inspection	NA	900 MB	900 MB	894 MB	870 MB
LabVIEW PID Control and Fuzzy Logic Toolkit	84.4 MB	61.4 MB	61.4 MB	60 MB	60 MB
LabVIEW Robotics Module	278 MB	250 MB	250 MB	184 MB	185 MB
LabVIEW Simulation Interface Toolkit	NA	200 MB	200 MB	148 MB	148 MB
LabVIEW Statechart Module	96.4 MB	73.2 MB	73.2 MB	72 MB	72 MB
LabVIEW NI SoftMotion Module	106 MB	88.9 MB	93.2 MB	85 MB	77 MB
NI Motion Assistant	453 MB	449 MB	449 MB	243 MB	243 MB

Hardware Drivers					
▼ NI Device Drivers					
Product Description	August 2013	March 2013	August 2012	February 2012	August 2011
NI Device Drivers DVD	3513 MB	3.24 GB	4.7 GB	4.7 GB	3.6 GB
NI-DAQmx	1.6 KB	1.6 GB	1.51 GB	1.3 GB	1.3 GB
NI-RIO	2.46 GB	2.51 GB	2.46 GB	1.9 GB	1.9 GB
NI ELVISmx	1.57 GB	1.57 GB	1.57 GB	1.3 GB	1.3 GB

Figure 2: Software to download

- Once you've downloaded the myRIO DVD 1 and DVD2, run the setup executable of DVD1. Install the components as seen in Figure 3. During the install, you will be asked for a serial #. If you haven't been provided with one in class, choose "evaluation mode", otherwise, use the serial # you've been given.

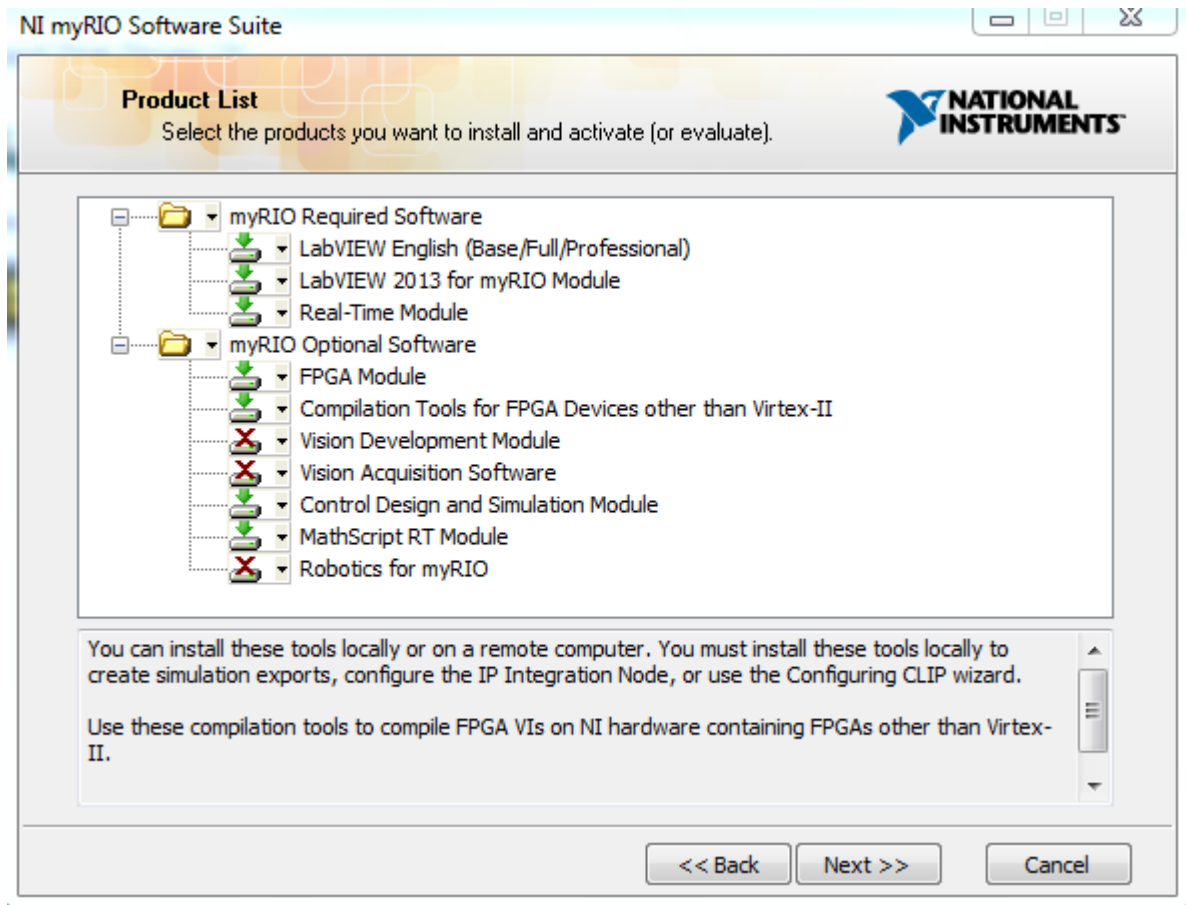


Figure 3: Items to install during myRIO Software Suite setup

- Run the ELVISmx installer and install ELVISmx. You are done!

MIT OpenCourseWare
<http://ocw.mit.edu>

2.14 / 2.140 Analysis and Design of Feedback Control Systems
Spring 2014

For information about citing these materials or our Terms of Use, visit: <http://ocw.mit.edu/terms>.