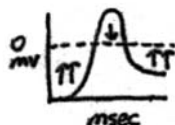


Lecture notes courtesy of Wyan-Ching Mimi Lee. Used with permission.

3/3/04

muscle AP



reversal potential = 0 (or -15 mV, depending on muscle cell)
 b/c AChR lets in Na^+ and K^+

- collagenase to get postsynaptic side clear, patch clamp (w/ ACh in blunt microelectrode), look at current flow (magnitude + direction)

↳ voltage clamp

($V_m < 0$; current negative = inward)

$V_m > 0$, current positive = outward)

- ionotropic receptors have reversal potentials

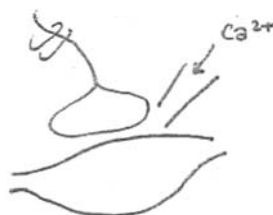
- if E_{reversal} above or below threshold, determines if excitatory or inhibitory

- if $E_{\text{reversal}} = \text{threshold}$, will not affect either way

- stimulate extracellularly presynaptic, record intracellularly postsynaptic

- need Ca^{2+} (4) for presynaptic transmitter release, EPSP

- cobalt interferes w/ natural Ca^{2+} leak from slightly damaged muscle



Ca^{2+} must be near synaptic cleft, present around when AP reaches terminal (or right before reaches terminal)

treated whole system w/ TTX, increased stimulus intensity to passively conduct to terminal:

found that pure voltage could mimic AP: evidence for voltage-gated Ca^{2+} channels

- intracellular presynaptic injection of Ca^{2+} also gives EPSP

- minis - correspond to small releases of ACh (b/c can affect w/ curare, neostigmine)

- make up mEPSP: reduce Ca^{2+} , stimulate presynaptically, record postsynaptically

- effect comes in quantal sizes (Mn)

- Gaussian distribution around 0.4 mV

↳ direct evidence for quantal transmission

- large number of vesicles w/ equal & independent probability of release (from Poisson curve assumptions)

- make preparations of synapses, synaptic vesicles
 - synaptobrevin - V-SNARE (important in exocytosis)
 - target of botulinum toxin (BOTOX) & tetanus toxin
 - mutants homologous to yeast mutants w/ exocytotic defects
 - yeast cycle vesicles between inner & outer lamellae
 - bad-cycling due to mutant v-snares & t-snares
 - vesicle endocytosis looked at in cell-free dog pancreas system; these same proteins showed up
 - synaptotagmin - Ca^{2+} binding domain: this is the calcium sensor for vesicle exocytosis

- neuromuscular junctions can be modulated
 - (eg by chip screaming - potentiated by adrenaline)
 - potentiated by sympathetic stimulation (neuromuscular transmission)
 - Orbelli effect (controversy: presynaptic or postsynaptic?): turns out is both
 - do quantal analysis before + after sympathetic stimulation; more quanta released per action potential will give more double, triple, etc releases (average # releases), if presynaptic effect; if postsynaptic (eg more ACh Rs, or more sensitive ACh Rs, will not affect placement of peaks by shifting histogram right (eg 0.4 mV \rightarrow 0.6 mV)

- $P(x) = e^{-m} \frac{m^x}{x!}$ (but there is better way)

So: if presynaptic \rightarrow easy to tell 0's from 1's : $P_0 = e^{-m} \left(\frac{m^0}{0!} = 1 \right)$
 if postsynaptic \rightarrow (increase mean quantal content) (P_0 decreases)
 if postsynaptic, will affect quantal size
 measure fraction of failures, see if goes up or down

- mean quantal content = average # quanta (vesicles) released per stimulus (not contents of vesicle)
 - measure fraction of failures, plug into $P_0 = e^{-m}$ (no dimensions)
 - \rightarrow fraction of failures
 - higher quanta release # = lower probability of failure

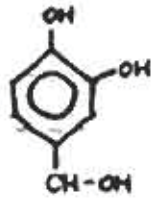
to measure change in quantal size, look at minis, look at size of mEPSPs

- this will increase if Orbelli effect postsynaptic

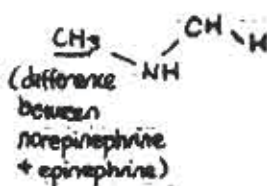
- quantal size $\bar{V}_1 =$ average voltage displacement of quantum of spontaneous miniature potential
not physical size of vesicle (all ~ same size, same density of transmitter)

norepinephrine
Orbelli effect: more adrenaline comes down sympathetic axons to neuromuscular junctions

- adrenal glands secrete another compound (cycles around your body): norepinephrine & epinephrine
- these result in presynaptic enhanced quantal release (NE)
- also postsynaptic response from circulating hormone (EPI)



phenylethylamine → tyrosine → tyramine → dopamine → noradrenaline
adrenaline ← (norepinephrine) → NE



adrenaline from adrenal medulla (on top of kidney)
- epinephrine same in Greek
↳ EPI

norepinephrine & epinephrine both from phenylethylamine, differ by methyl group

antagonist: β -propranolol (EPI antagonist) drug used for asthma in hospitals, stage fright
heart conditions
- applying this gives no change in quantal size
- better music performance

epinephrine - agonist = isoproterenol
(adrenaline) antagonist = β -propranolol (block adrenergic response on postsynaptic side)

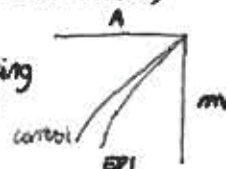
presynaptic - look at number of failures (Cuba found less failures)

norepinephrine - agonist = norepinephrine
(noradrenaline) antagonist = clonidine (blocks presynaptic response, gives pure postsynaptic)

postsynaptic - look at quantal size (will be bigger w/ Orbelli-effect)

- postsynaptic so increase actually from epinephrine closing leakage channels

depolarizing current leaks out less if $R \uparrow$ (R input)
 $V = IR$
so $R \uparrow$, $V \uparrow$
depolarizes more & longer



I from ionotropic AChRs: doesn't change, depolarizes cell, but leaks out b/c muscle is big; plug up leakage holes in muscle, increase R

- modulated synapses - have volume control
- norepinephrine + epinephrine are modulatory transmitters (gain control)

MIT OpenCourseWare
<http://ocw.mit.edu>

7.29J / 9.09J Cellular Neurobiology
Spring 2012

For information about citing these materials or our Terms of Use, visit: <http://ocw.mit.edu/terms>.